

# Hypercell®

RADIO FREQUENCY SOLUTIONS FOR MOBILE NETWORKS



CREATE  
YOUR 5G  
with ACOME

ACOME



**OUTDOOR**  
CELLULAR TELECOM NETWORKS - MICROWAVE CABLING SYSTEMS  
**INDOOR**  
INDOOR DAS - TUNNELS AND TRANSPORTATION





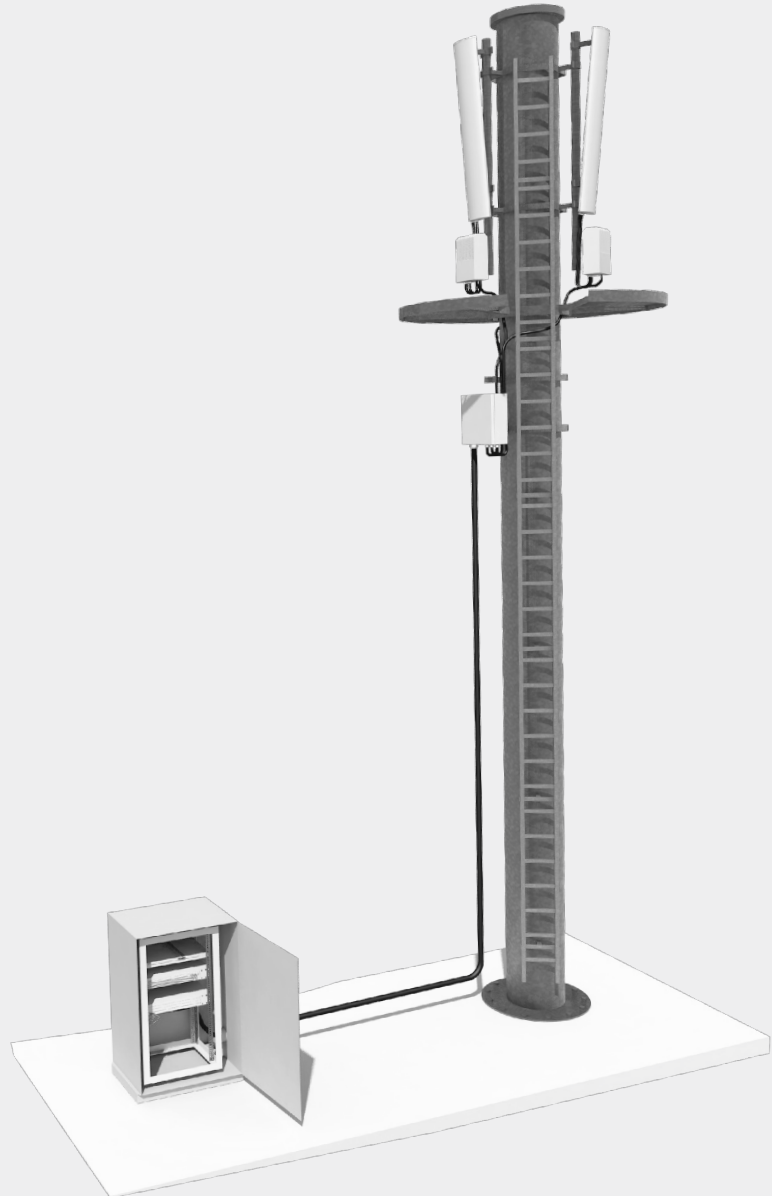
# Cellular Telecom Networks

**ACOME HYPERCELL®**  
Antenna line is covering complete range of RF passive components as feeder cables, connectors, jumpers, grounding kits, Surge arrestors, Hangers, and waterproofing kits.

## ACOME ADVANTAGES

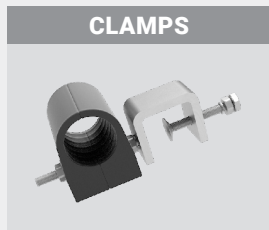
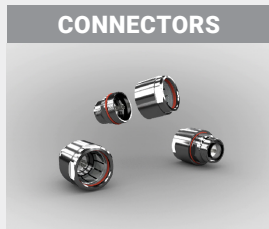
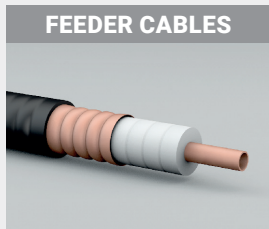
- + Broadband solution including 5G frequencies.
- + Low PIM products.

All these components are designed and manufactured to ensure the best performance of the transmission system in the most severe environment.



OUTDOOR CELLULAR TELECOM NETWORKS

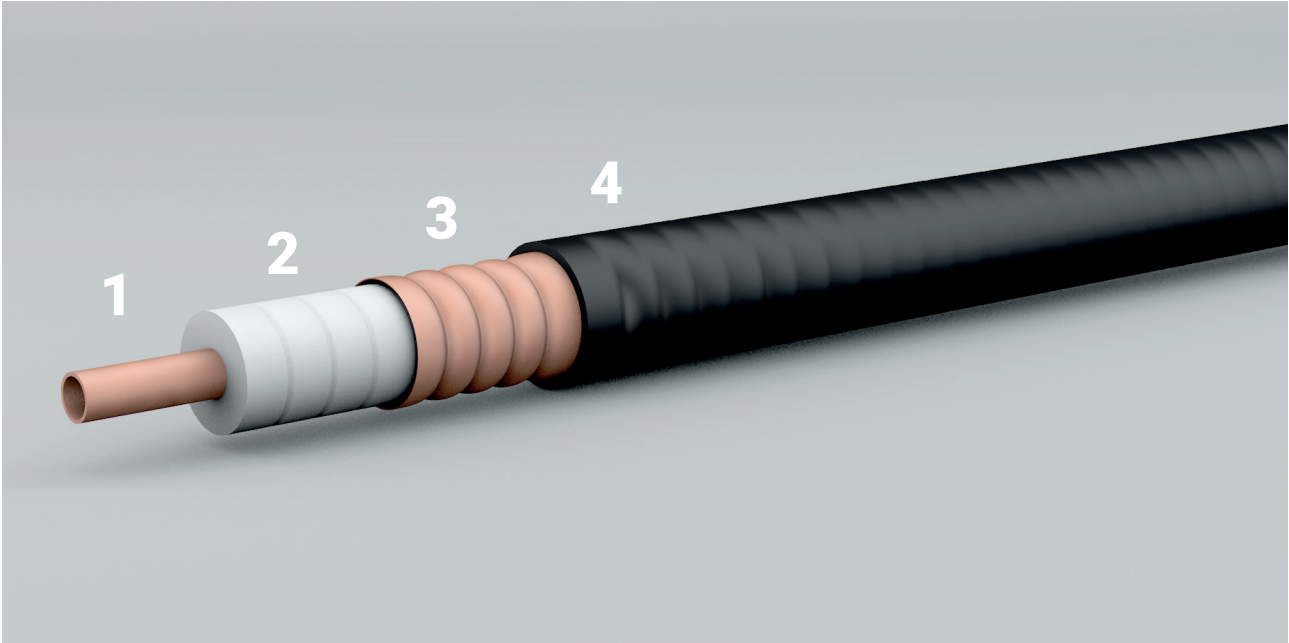
## Products



# Feeder Cables



**HYPERCELL®** Low loss feeder for RF signal transmission between equipments.



## 1. INNER CONDUCTOR

Copper-clad aluminium wire, smooth or corrugated copper tube.

## 2. DIELECTRIC

Low-loss dielectric made of foamed polyethylene with homogeneous and closed cells.

## 3. OUTER CONDUCTOR

Corrugated outer conductor allows continuous EMI/RFI shielding while offering great mechanical strength and adequate flexibility for an easy installation.

## 4. OUTER JACKET

The black polyethylene jacket is fully waterproof and ultraviolet resistant, allowing long term operation for outdoor applications. It ensures high mechanical and environmental resistance.

## BENEFITS

- + *Each cable drum is 100% controlled in both sides.*
- + *Low attenuation products for better network coverage.*
- + *Low PIM and broadband products for better network capacity (including 5G frequencies).*

Cable	FLEXIBLE					
	1/4" F	3/8" F	1/2" F	7/8" LA	1-1/4" LA	1-5/8" LA
PE jacket	M2930Z	M6041Z	M1473Z	M5407Z	M2937Z	M2939Z
LSOH Jacket	M2932Z	M6047Z	M2831Z	M5422Z	M2938Z	M2940Z

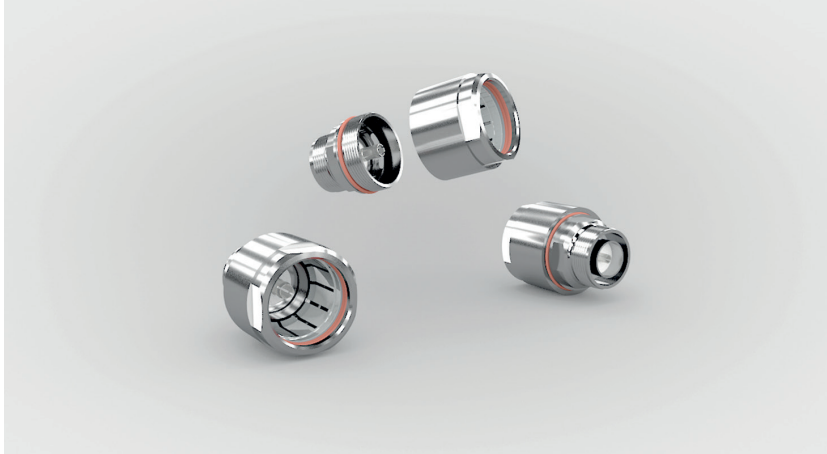
SUPER FLEXIBLE		
1/4" SF	3/8" SF	1/2" SF
M2929Z	M5458Z	M2839Z
M2931Z	M5554Z	M2830Z

OUTDOOR CELLULAR TELECOM NETWORKS

# Connectors

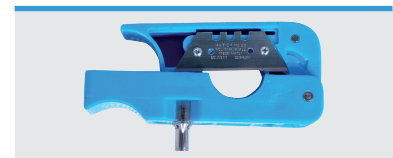


**HYPERCELL® feeder line connectors connect feeder cables to jumpers and equipments.**



## BENEFITS

- + Use our preparation tool for an easier, faster and safer installation of connectors.



OUTDOOR CELLULAR TELECOM NETWORKS

### INTERFACES

- 7/16 DIN (IEC 60169-4).
  - N (IEC 60169-16).
  - 4.3-10 (IEC 60169-54).
- in straight and elbow type.

### REDUCE INVENTORY & OPEX

- New plating fitting both aluminium and copper cables.

### PERFORMANCES

- Excellent VSWR.
- Low PIM ensured.
- Including 5G frequencies.

### EASY TO USE

- 2-piece connectors.
- Fast, Easy and Reliable assembly.
- Tools available for the installation.

### ENVIRONMENT

- IP 68 waterproofing level (3 meters/3 hours) ensured by O-rings inside the body, and silicon gaskets in the coupling nuts.
- Compliance to REACH and ROHS.

Cable	FLEXIBLE						SUPERFLEXIBLE		
	1/4" F	3/8" F	1/2" F & ALU	7/8" ALU & LA	1-1/4" ALU & LA	1-5/8" ALU & LA	1/4" SF	3/8" SF	1/2" SF
<b>N Female</b>	C0056E	C0062X	C0059E	C0657E	C0057E	C0067E	C0038E	C4271E	C0044E
<b>N Male</b>	C0066E	C0064X	C0375E	C0656E	C0058E	C0068E	C0036E	C2863E	C0042E
<b>N Male Elbow</b>	C0065E	C0063X	C0060E	C1055E	C1056E	C1057E	C0037E	C4272E	C0043E
<b>7/16 DIN Female</b>	C2386E	C0051X	C0001E	C0631E	C0003E	C0004E	C4993E	C4273E	C0032E
<b>7/16 DIN Male</b>	C2385E	C0053X	C0006E	C0632E	C0049E	C0054E	C0806E	C4274E	C0005E
<b>7/16 DIN Male Elbow</b>	C1060X	C0052X	C0050E	C1061E	C1062E	C1063E	C0980E	—	C0031E
<b>4.3-10 Female</b>	—	—	C2355E	C2279E	C2664E	—	—	—	C2418E
<b>4.3-10 Male</b>	C4084E	—	C2354E	C2421E	C2759E	—	C5755E	—	C2276E
<b>4.3-10 Male elbow</b>	—	—	C2419E	C2422E	C4087E	—	C5756E	—	C2420E
<b>Preparation tool</b>	—	—	C1574X	C0351X	C0352X	C0353X	C0233X	C0234X	C1573X



### FIND OUR VIDEOS OF INSTALLATION AND IMPLEMENTATION

**1/2" SF connectors:** <https://youtu.be/MtaSsH2xLmA> - [https://youtu.be/l8\\_e\\_UH5ZJw](https://youtu.be/l8_e_UH5ZJw)

**1/2" F connector:** [https://www.youtube.com/watch?v=l8\\_e\\_UH5ZJw](https://www.youtube.com/watch?v=l8_e_UH5ZJw)

**7/8" connectors:** <https://youtu.be/ltClSjVQJYk>

**1-1/4" connectors:** <https://www.youtube.com/watch?v=WEUxhu6ANDI>

**1-5/8" connectors:** <https://youtu.be/sw0gLzPESfc> - <https://youtu.be/sw0gLzPESfc>

# Jumper Cables



HYPERCELL® jumpers provide flexibility to antenna line radiofrequency connectors.



## INTERFACES

- N (IEC 60169-16).
- 7/16 DIN (IEC 60169-4).
- 4.3-10 (IEC 60169-54).
- Nex10® (IEC 46F/483/NP).
- MQ4 (IEC 63138-2:2020).
- MQ5 (IEC 63138-3:2020).

## FLEXIBILITY

- Low bending moment to avoid any mechanical stress.

## JACKET

- Polyethylen (PE).
- Indoor/Outdoor LSOH  
Fire-retardant UL available.

## PERFORMANCES

- Soldered connectors to ensure Low VSWR and passive intermodulation.
- 100% Factory-controlled.
- Broadband including 5G frequencies.

## WATERPROOFNESS

- IP 68 Waterproof.

## BENEFITS

- + Available in Flexible, Super Flexible & Extra Flexible type.
- + Available with factory installed proofing roots.

OUTDOOR  
CELLULAR TELECOM NETWORKS

# Waterproofing boots

HYPERCELL® Waterproofing boots protect antenna ports and jumper interfaces.



## APPLICATION

Protects IP67 connectors and jumpers to antenna interfaces from moisture or water ingress.

## BENEFITS

- + IP 68 connectors do not need using any waterproofing kit.

## WATERPROOFING BOOT

1/2" SF & 1/2F 4.3-10 connector C5866X

To help you installing the boot easily, we propose an installation tool to install on connector interface.

## WATERPROOFING BOOT INSTALLATION TOOL

1/2" SF & 1/2F 4.3-10 connector C5877X



# Jumper Cables



OUTDOOR CELLULAR TELECOM NETWORKS

<b>FLEXIBLE</b>	<b>1/4" F</b>	<b>PE Jacket</b>	N Male - N Male		
		<b>LSOH Jacket</b>	Please contact our sales office		
	<b>1/2" F</b>	<b>PE Jacket</b>	N Male - N Male	7/16 DIN Female - 7/16 DIN Female	4.3-10 Male - 7/16 DIN Male
			7/16 DIN Male - 7/16 DIN Female	4.3-10 Male - 4.3-10 Male	
7/16 DIN Male - N Female			4.3-10 Male - 7/16 DIN Male elbow		
<b>LSOH Jacket</b>		N Male - N Male	7/16 DIN Male - 7/16 DIN Male	4.3-10 Male - 4.3-10 Male	
<b>SUPERFLEXIBLE</b>	<b>1/4" SF</b>	<b>PE Jacket</b>	N Male - N Male	7/16 DIN Female - 7/16 DIN Female	4.3-10 Male - Nex10 Female
			7/16 DIN Male - 7/16 DIN Male		
			7/16 DIN Male - 7/16 DIN Male elbow		
			7/16 DIN Male elbow - 7/16 DIN Male elbow		
	<b>LSOH Jacket</b>	N Male - N Female	7/16 DIN Male elbow - 7/16 DIN Male elbow	MQ4 Male - 4.3-10 Male	
		N Male - N Male elbow		MQ4 Female - Nex10 Male	
		N Female - N Male elbow		MQ5 Female - Nex10 Male	
	<b>3/8" SF</b>	<b>PE Jacket</b>	N Male - N Male	7/16 DIN Male elbow - 7/16 DIN Female	4.3-10 Male - 4.3-10 Male
			N Male - N Male elbow	7/16 DIN Male - 7/16 DIN Female	4.3-10 Male - 4.3-10 Male elbow
			N Male - N Female elbow	7/16 DIN Male - 7/16 DIN Male elbow	Nex10 Male - 4.3-10 Male
			7/16 DIN Male - 7/16 DIN Male	Nex10 Male - Nex10 Male	
			7/16 DIN Male - N Male		
7/16 DIN Male - N Female					
<b>LSOH Jacket</b>	N Male - N Male				
<b>SUPERFLEXIBLE</b>	<b>1/2" SF</b>	<b>PE Jacket</b>	N Male - N Male	7/16 DIN Female - 7/16 DIN Female	4.3-10 Male
			N Male - N Female	7/16 DIN Female - N Male	4.3-10 Male - 7/16 DIN Male
			N Male - N Male elbow	7/16 DIN Female - N Female	4.3-10 Male elbow - 4.3-10 Female
			7/16 DIN Female - N Male elbow	4.3-10 Male - 4.3-10 Female	
			7/16 DIN Male - 7/16 DIN Female		
			7/16 DIN Male - 7/16 DIN Male elbow		
			7/16 DIN Male - 7/16 DIN Male		
			7/16 DIN Male - N Female		
			7/16 DIN Male - N Male		
			7/16 DIN Male - N Male elbow		
	7/16 DIN Male elbow - 7/16 DIN Female				
	7/16 DIN Male elbow - N Male				
<b>LSOH FR Jacket</b>	N Male - N Male	7/16 DIN Male - 7/16 DIN Male	4.3-10 Male		
	N Male - N Female	7/16 DIN Male - 7/16 DIN Male elbow	4.3-10 Male - 7/16 DIN Male		
	N Male - N Male elbow		4.3-10 Male - 7/16 DIN Male Elbow		
<b>EXTRA FLEXIBLE</b>	<b>1/4" XF</b>	<b>PE Jacket</b>	Please contact our sales office		
		<b>LSOH Jacket</b>	Please contact our sales office		
	<b>3/8" XF</b>	<b>PE Jacket</b>	N Male - N Male		
		<b>LSOH Jacket</b>	N Male - N Male		



# Surge arrestors



HYPERCELL® surge arrestors protect equipments to lightning currents.



## Quarterwave Type

### POWER

- Up to 2500W.

### DISCHARGE

- Current discharge up to 100kA.

### MAINTENANCE

- Maintenance free.

SURGE ARRESTOR	QUARTERWAVE TYPE
7/16 DIN Female - 7/16 DIN Male, bulkhead	C0600A
7/16 DIN Female - 7/16 DIN Male	C0876A
7/16 DIN Female - 7/16 DIN Female, bulkhead	C0602A
7/16 DIN Female - 7/16 DIN Female	C0877A



## Gas tube Type

### POWER

- Up to 1000W.

### DISCHARGE

- Current discharge up to 20kA.

### BANDWIDTH

- Broadband.

SURGE ARRESTOR	GAS TUBE TYPE
7/16 DIN Male - 7/16 DIN Male	C1046A
7/16 DIN Male - 7/16 DIN Female, bulkhead	C0878A
7/16 DIN Female - 7/16 DIN Female, bulkhead	C0879A

OUTDOOR  
CELLULAR TELECOM NETWORKS



# Grounding Kits

HYPERCELL® grounding kits connect outer conductor to the grounding bar.



OUTDOOR CELLULAR TELECOM NETWORKS

## TYPE

- Framework type for an integrated solution.

## COMPATIBILITY

- Fit both copper and aluminum cables.

## EASY TO INSTALL

- Easy, fast and reliable installation.

## SIZE

- Ground cable available in 0.6m and 1.0m length.

## WATERPROOFNESS

- IP68 waterproof thanks to a vulcanizing rubber integrated.
- Corrosion resistant.

### GROUNDING KITS

	With 0.6m Grounding Cable	With 1m Grounding Cable	Preparation tool
1/4" XF	C0275F	Y0275X	–
3/8" XF	C0270F	C0270X	–
1/4" F	C1113F	C1113X	–
3/8" F	C1114F	C1114X	–
1/2" F	C0271F	C0271X	C2841X
7/8" LA	C0272F	C0272X	C2840X
1-1/4" LA	C0273F	C0273X	–
1-5/8" LA	C0274F	C0274X	–



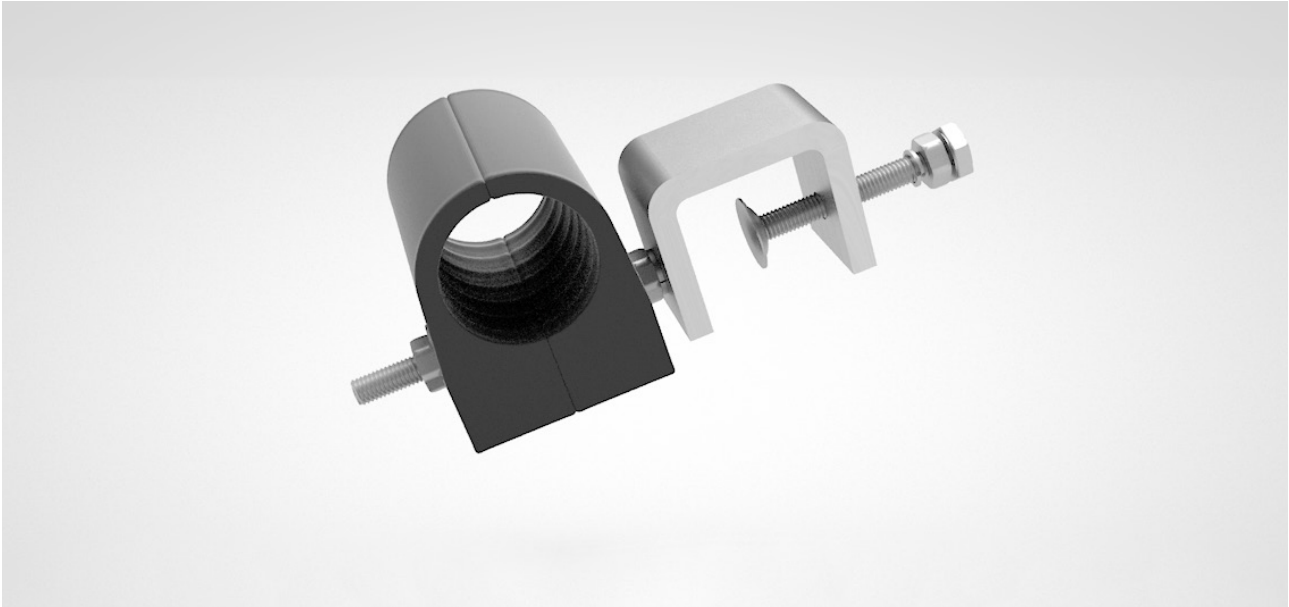
## FIND OUR VIDEOS OF INSTALLATION

[https://www.youtube.com/watch?v=\\_yllAbhSHc8&t=6s](https://www.youtube.com/watch?v=_yllAbhSHc8&t=6s)

# Clamps



HYPERCELL® clamps fix antenna line to the site infrastructure.



## FUNCTION

Support the cable every meter to avoid any risk of slippage or longitudinal deformation which could be induced by the cable weight, the wind velocity, gusts induced turbulences and the vibrations of the tower.

## IN SEVERE CONDITIONS

In some critical areas, ice accumulation will increase the overall loading. In such case, a reduction in the hanger spacing is necessary.

## BENEFITS

- + *The advised 1.00 meter hanger spacing has been determined for wind velocity of 160km/h and 10mm of radial ice.*
- + *If one of these variable is changed, the spacing between hangers must be brought back to 0.60m.*

OUTDOOR  
CELLULAR TELECOM NETWORKS

		EXTRA FLEXIBLE		FLEXIBLE					
Cable		1/4"XF	3/8"XF	1/4"F	3/8"F	1/2"F	7/8"LA	1-1/4" LA	1-5/8" LA
Simple Clamp	1 hole	C0999S	C1042S	C1154S	C1044S	C0108S	C0111S	C0114S	C0117S
	2 holes		C1173S	C1155S	C1176S	C0109S	C0112S	C0115S	C0118S
	3 holes		C1174S	C1156S	C1177S	C0110S	C0113S	C0116S	C0119S
	4 holes		C1175S	C1157S	C1178S	C0781S	C0655S	C0782S	C0783S
Double Clamp	2 holes					C1034S	C1035S	C1036S	C1037S
	4 holes					C1150S	C1151S	C1152S	C1153S
	6 holes					C0651S	C0652S	C0653S	C0654S

# Microwave Link Cabling Systems

ACOME offers all passive components of IDU (Indoor Unit)-ODU (Outdoor Unit) link for point-to-point communication systems (Microwave, GPS...).

## Products

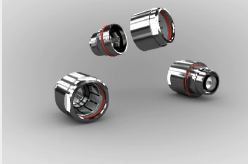
CABLES



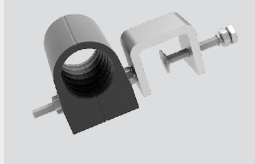
GROUNDING KITS



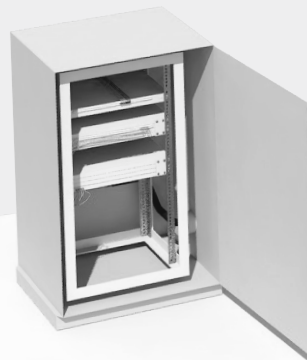
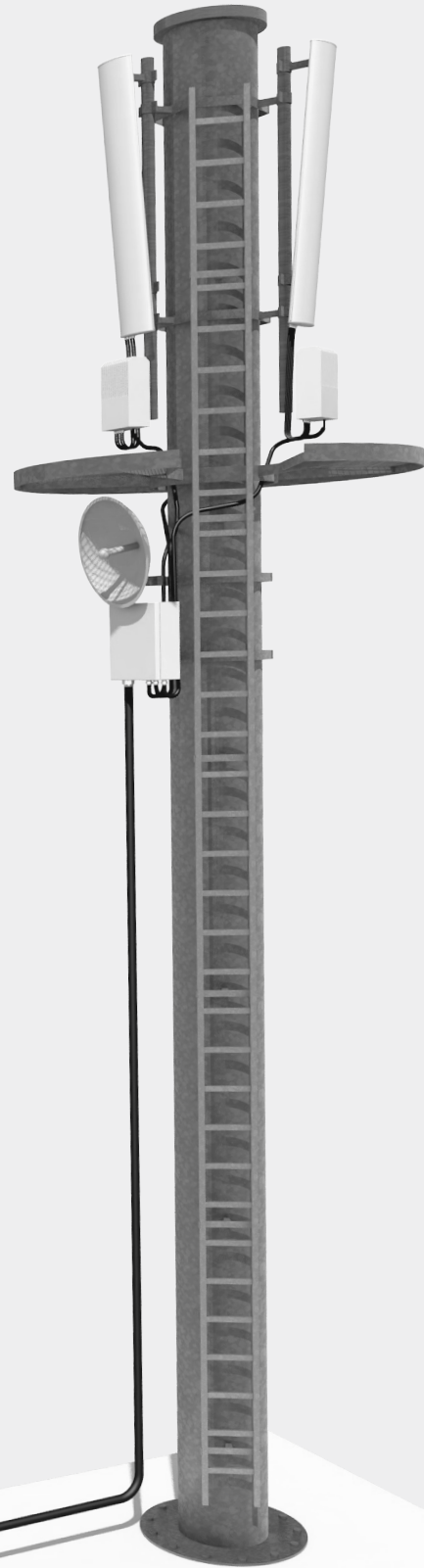
CONNECTORS



CLAMPS



SURGE ARRESTORS

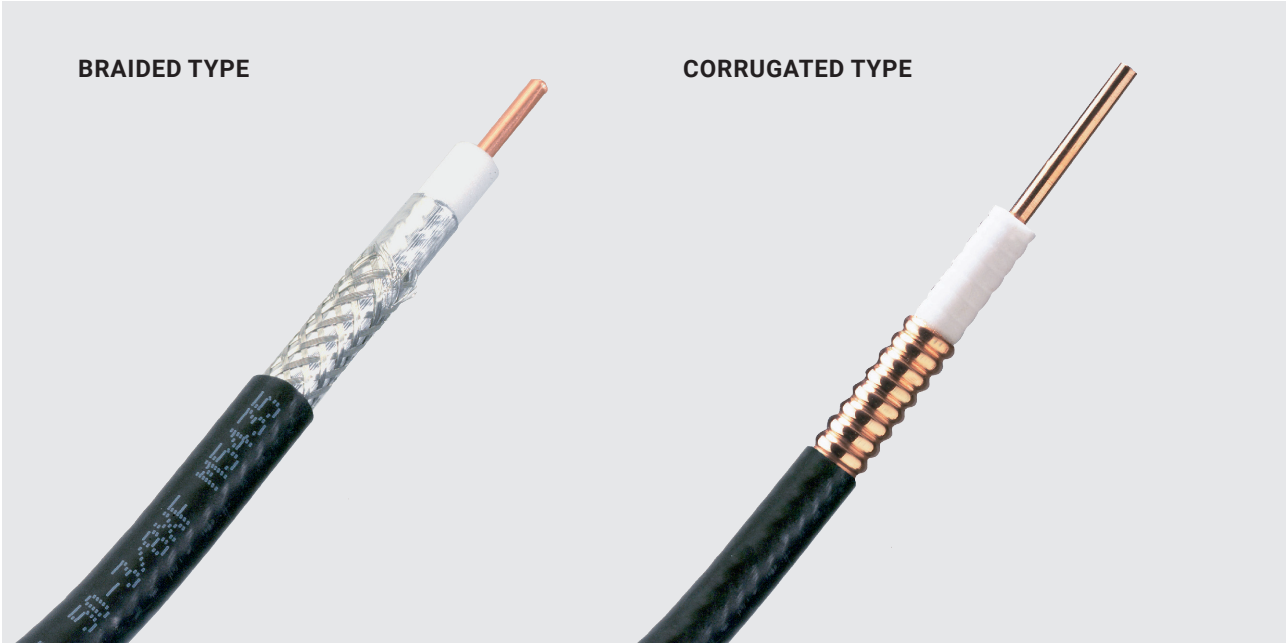


OUTDOOR  
MICROWAVE LINK CABLING SYSTEMS

# Cables



**HYPERCELL®** microwave cables connect IDU (Indoor Unit)-ODU (Outdoor Unit).



## SIZE

- 1/4", 3/8" and 1/2" all available.

## TYPE

- Extra Flexible: Braided type (screening effectiveness >88dB).
- Flexible: Corrugated type (screening effectiveness >120 dB).

## JACKET

- PE.
- Indoor/Outdoor LSOH Fire retardant Jacket.

FLEXIBLE					
1/4" F		3/8" F		1/2" F	
PE Jacket	LSOH FR Retardant	PE Jacket	LSOH FR Retardant	PE Jacket	LSOH FR Retardant
M2930Z	M2932Z	M6041Z	M6047Z	M1473Z	M2831Z

EXTRA FLEXIBLE		
1/4" XF	3/8" XF	
LSOH FR Retardant	PE Jacket	LSOH FR Retardant
M5361Z	M5437T	M5435T

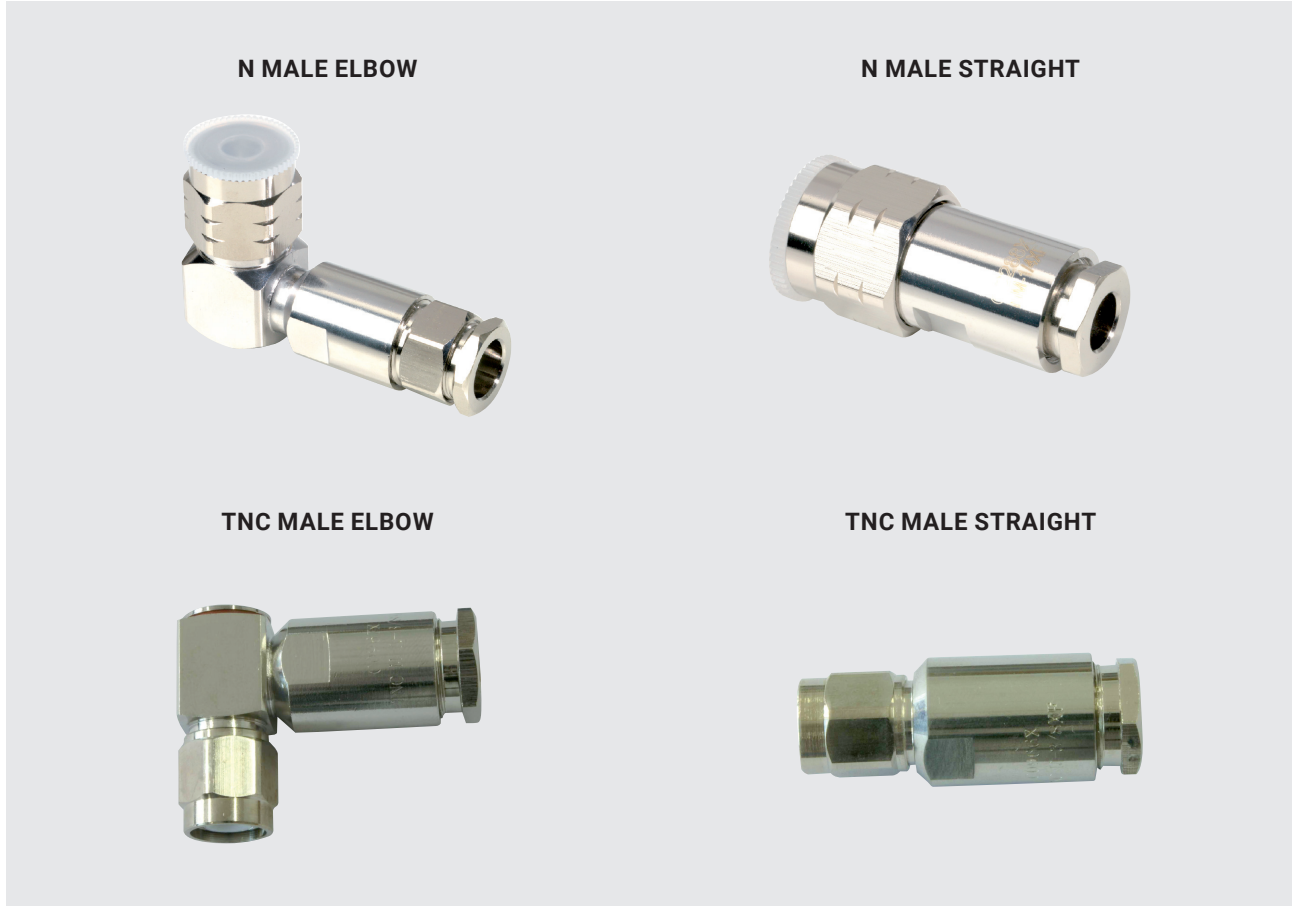
OUTDOOR  
MICROWAVE LINK CABLING SYSTEMS



# Connectors

HYPERCELL® microwave connectors connect microwave cable to the IDU (Indoor Unit)-ODU (Outdoor Unit).

OUTDOOR MICROWAVE LINK CABLING SYSTEMS



### INTERFACES

- N (IEC 60169-16).
- TNC (IEC 60169-17).

### TYPE

- Straight and Elbow type available.

### WATERPROOFNESS

- IP68.

	EXTRA FLEXIBLE		FLEXIBLE		
	1/4" XF	3/8" XF	1/4" F	3/8" F	1/2" F
<b>N Female</b>	C1048X	C0327X	C0056X	C0062X	C0059X
<b>N Male</b>	C0288X	C0045X	C0066X	C0064X	C0375X
<b>N Male elbow</b>	C0324X	C0326X	C0065X	C0063X	C0060X
<b>TNC Male</b>	C0976X	C1172X	C1049X	C1050X	C1051X
<b>TNC Male elbow</b>	C0977X	C0967X	C1052X	C1053X	C1054X

# Surge Arrestors



HYPERCELL® surge arrestors protect IDU (Indoor Unit)-ODU (Outdoor Unit) link and equipment to lightning current.



OUTDOOR  
MICROWAVE LINK CABLING SYSTEMS

## TYPE

- N Type.
- Bulkhead.

## PERFORMANCES

- Power up to 1000W.
- Current discharge up to 20kA.
- Low VSWR and insertion loss.
- Bi-directional.

## OPERATING FREQUENCIES

- Broadband including DC.

SURGE ARRESTOR	GAS TUBE TYPE
N Female/N Female, bulkhead	C0604A
N Male/N Female, bulkhead	C0603A



# Grounding Kits

HYPERCELL® Grounding kits connect IDU (Indoor Unit)-ODU (Outdoor Unit) link outer conductor to the grounding bar.



OUTDOOR MICROWAVE LINK CABLING SYSTEMS

## TYPE

- Framework type for an integrated solution.

## COMPATIBILITY

- Fit both aluminum and copper material.

## EASY TO INSTALL

- Easy, fast and reliable installation.

## SIZE

- Ground cable available in 0.6m and 1.0m length.

## WATERPROOFNESS

- IP 68 waterproof thanks to a vulcanizing rubber integrated.
- Corrosion resistant.

### GROUNDING KITS

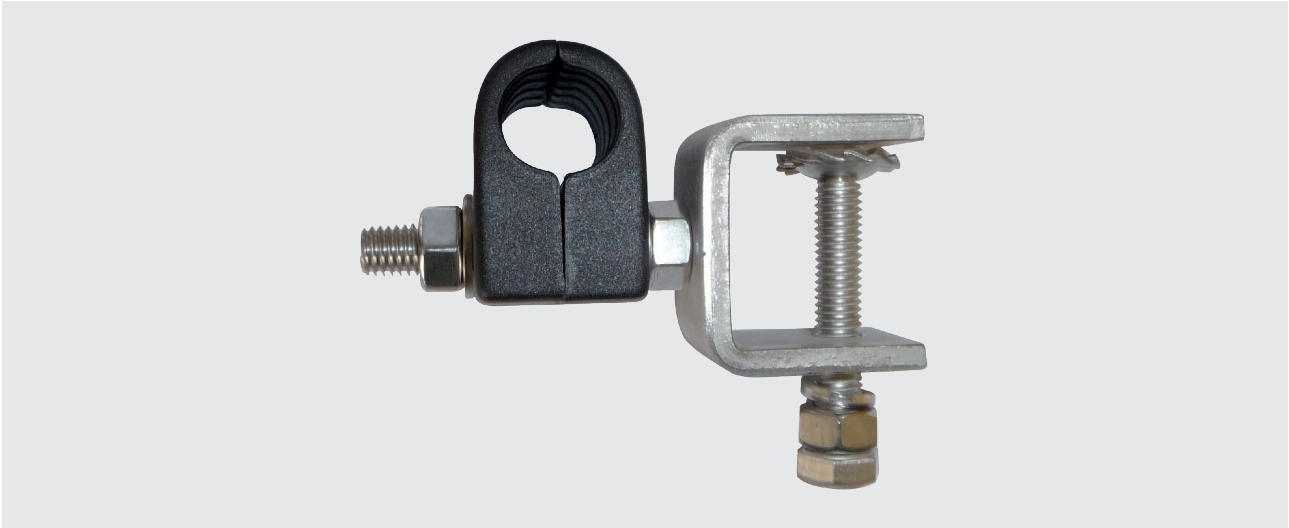
	GROUNDING KITS	
	With 0.6m Grounding Cable	With 1m Grounding Cable
1/4" XF	C0275F	Y0275X
3/8" XF	C0270F	C0270X
1/4" F	C1113F	C1113X
3/8" F	C1114F	C1114X
1/2" F	C0271F	C0271X



# Clamps



**HYPERCELL® clamps fix IDU (Indoor Unit)-ODU (Outdoor Unit) units link to the infrastructure.**



## FUNCTION

Support the cable every meter to avoid any risk of slippage or longitudinal deformation which could be induced by the cable weight, the wind velocity, gusts induced turbulences and the vibrations of the tower.

## IN SEVERE CONDITIONS

In some critical areas, ice accumulation will increase the overall loading. In such case, a reduction in the hanger spacing is necessary.

## BENEFITS

- + *We advise 1.00 meter hanger spacing for areas where wind velocity <160km/h and radial ice <10mm. If one of these both characteristics is increased, we advice to reduce hanger spacing to 0.60 meter.*

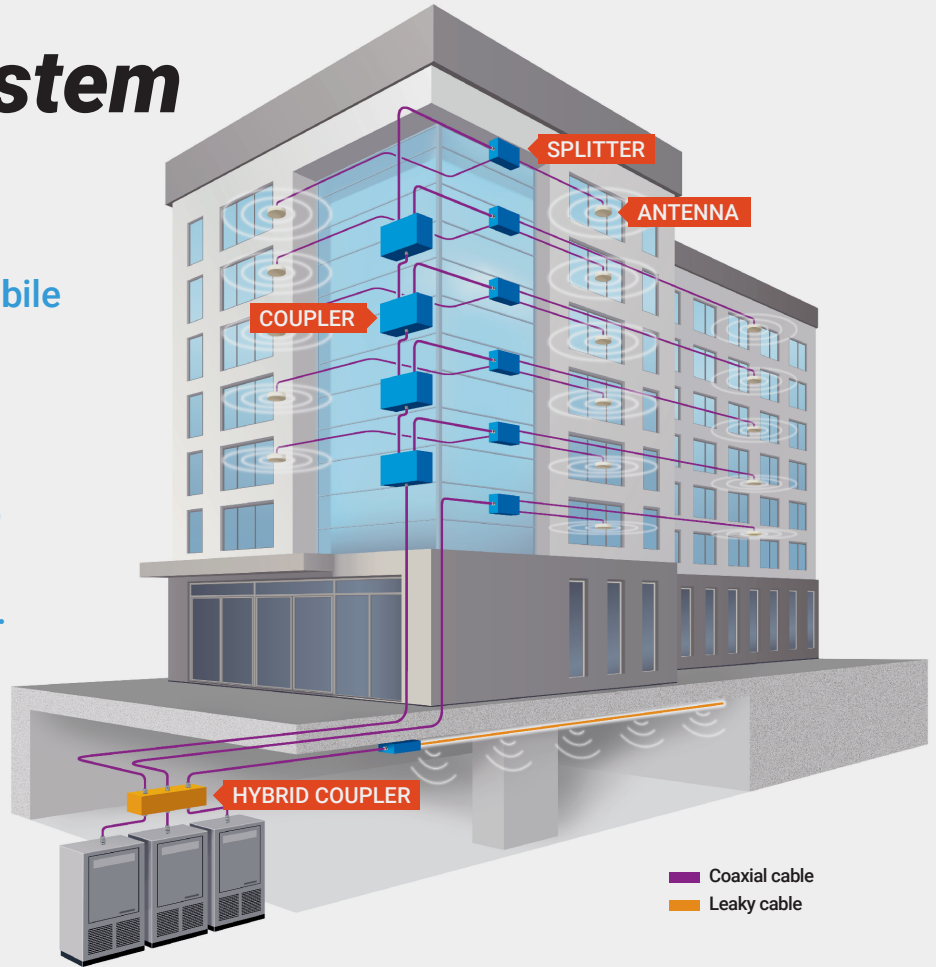
	EXTRA FLEXIBLE		FLEXIBLE		
<b>Cable</b>	<b>1/4" XF</b>	<b>3/8" XF</b>	<b>1/4" F</b>	<b>3/8" F</b>	<b>1/2" F</b>
<b>1 hole</b>	C0999S	C1042S	C1154S	C1044S	C0108S



# Indoor Distributed Antenna System

ACOME Hypercell® Indoor DAS solution is a complete broadband and low PIM Mobile Network for in-building environments.

This multi-carriers system has been designed to cover all wireless applications in the building including 5G.



INDOOR DISTRIBUTED ANTENNA SYSTEM

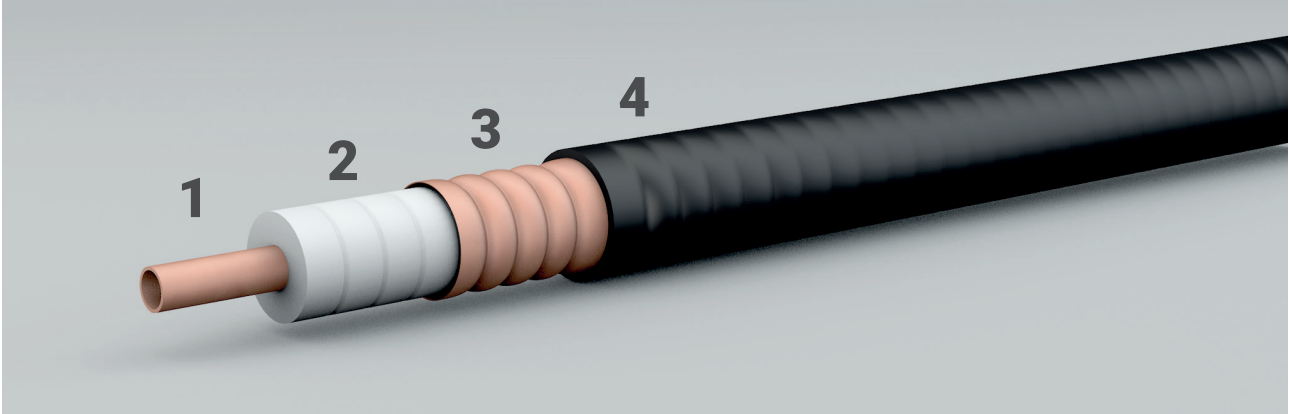
## Products

<p><b>LSOH FEEDER CABLES</b></p>	<p><b>LEAKY CABLES</b></p>	<p><b>CONNECTORS</b></p>	<p><b>JUMPERS</b></p>
<p><b>ANTENNAS</b></p>	<p><b>CHAMBER COUPLERS</b></p>	<p><b>POWER SPLITTERS</b></p>	<p><b>HYBRID COUPLERS</b></p>
<p><b>COMBINERS</b></p>	<p><b>ATTENUATORS</b></p>	<p><b>TERMINAL LOADS</b></p>	<p><b>REPEATERS</b></p>

# LSOH Feeder Cables



**HYPERCELL® low loss feeder cables for radiofrequency signal transmission in the Distributed Antenna System (DAS) network.**



## 1. INNER CONDUCTOR

Copper-clad Aluminium wire, Smooth or Corrugated Copper tube.

## 2. DIELECTRIC

Low-loss dielectric made of foamed Polyethylene with homogeneous and closed cells.

## 3. OUTER CONDUCTOR

Corrugated outer conductor allows continuous EMI/RFI shielding while offering great mechanical strength and adequate flexibility for an easy installation.

## 4. OUTER JACKET: 2 TYPES

### • Fire-retardant Low Smoke and "0" Halogen

HYPERCELL® Fire-retardant LSOH cables have been designed to fully match to IEC (International Electrotechnical Commission) standards.

Fire-resistance complies to IEC 60332-1 (Tests on single vertical cable under fire conditions) and IEC 60332-3A (Tests on bunched vertical cables under fire conditions). Our jacket is a non-toxic material (IEC 60754-1: Gases emitted during combustion) without any Halogen elements in its formulation. No acid gas is emitted during extinguishing (IEC 60754-2: Acidity index of gases) to protect people and electronic devices in case of fire start. The smoke emission is limited to ensure a safe evacuation of the building. (IEC 61034: Smoke generation of solid material) In addition to all the safety characteristics here above, Hypercell cables are UV resistant (UTE C32-063-2) with a high mechanical performances jacket.

This Indoor / Outdoor Jacket perfectly matches all "In-Buildings" and "Inter-Buildings applications".

This range of cables meets the requirements of the Construction Product Regulation (CPR) **Euroclass Dca**.

### • High Fire Retardant LSOH :

For specific environments such as Public Welcoming Facilities and tunnels applications (road, rail, metro...), ACOME offers a range of cables complying to NFC 32070.2.2 (C1) and RATP K26 (Parisian Metro) specifications.

UL 1666 Listed cables are also available.

This range of cables meets the requirements of the **B2ca Euroclass** according to the Construction Product Regulation (EN50575).

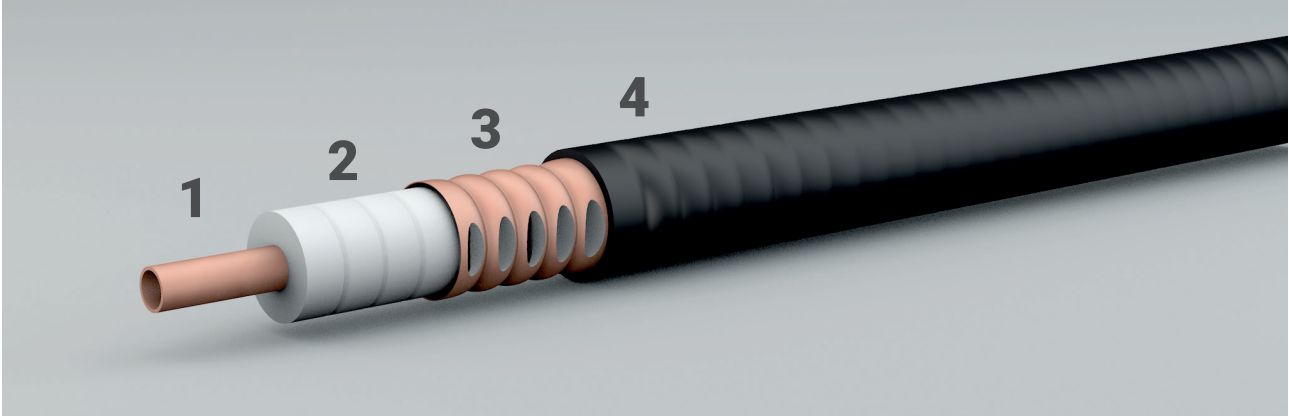
INDOOR  
DISTRIBUTED ANTENNA SYSTEM

	FLEXIBLE						SUPER FLEXIBLE			EXTRA FLEXIBLE	
	1/4" F	3/8" F	1/2" F	7/8" LA	1-1/4" LA	1-5/8" LA	1/4" SF	3/8" SF	1/2" SF	1/4" XF	3/8" XF
<b>LSOH Jacket</b>	M2932Z	M2936Z	M2831Z	M5422Z	M2938Z	M2940Z	M2931Z	M5554Z	M2830Z	M5361Z	M5435Z
<b>HFR Jacket</b>				M5322Z	M5434Z	M5358Z	M5302Z	M5540Z	M5308Z	M5332Z	M5333Z



# Leaky Cables

HYPERCELL® Leaky cables transport, transmit and receive Radiofrequency signals.



INDOOR DISTRIBUTED ANTENNA SYSTEM

## SIZE

- Whole range available: from 1/2" to 1-5/8.

## MODE

- Coupled mode type.

## JACKET

LSOH Fire-retardant:

- **B2ca classified** according to Construction Product Regulation (EN50575).
- IEC 60332.1 Tests on a single vertical cable under fire conditions.
- IEC 60332.3C Tests on bunched vertical cables under fire conditions.
- IEC 60754-2 : Acidity index of gases.
- IEC 61034 : Smoke generation of solid material.

## BENEFITS

- + *To optimize transmission performances, we advise to use specific clamps*



LSOH JACKET LEAKY CABLES			
1/2" RM	7/8" RM	1-1/4" RM	1-5/8" RM
M5398	M5510	M5400	M5404

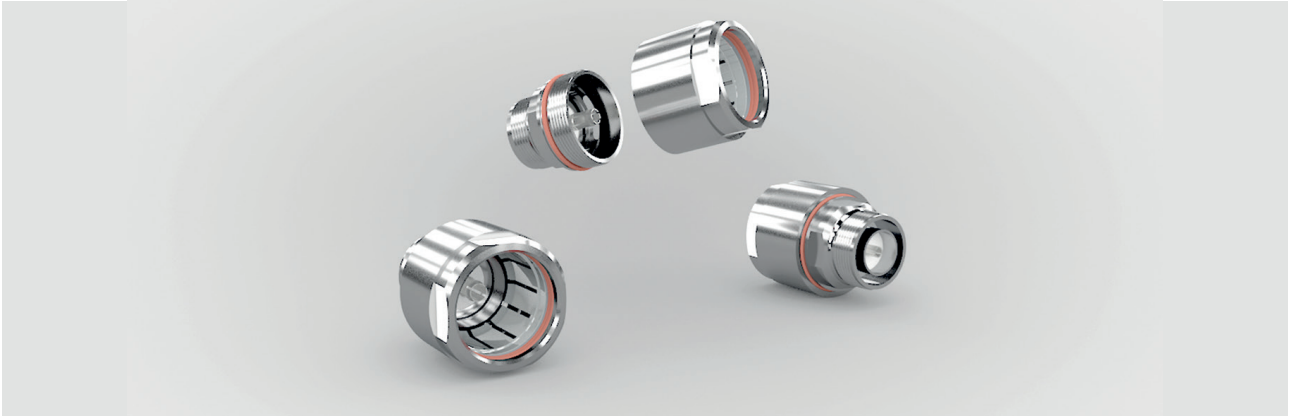
CLAMPS FOR LEAKY CABLES			
1/2" RM	7/8 RM	1-1/4RM	1-5/8 RM
C0771X	C0772X	C0773X	C0774X

METALLIC CLAMPS FOR LEAKY CABLES			
1/2" RM	7/8RM	1-1/4RM	1-5/8RM
C4384S	C4385S	C4386S	C4387S

# Connectors



**HYPERCELL®** connectors connect Radiofrequency cables to jumpers and equipments.



## INTERFACES

- Available in straight and elbow type N (IEC 60169-16).

## PERFORMANCES

- Excellent VSWR.
- Low PIM ensured.
- Including 3.5GHz 5G frequencies.

## EASY TO USE

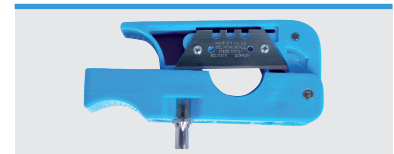
- 2-piece connectors.
- Fast, Easy and Reliable assembly.
- Tools available for the installation.

## ENVIRONMENT

Compliance to REACH and ROHS European standards.

## BENEFITS

- + Use our preparation tool for an easier, faster and safer installation of connectors.



INDOOR DISTRIBUTED ANTENNA SYSTEM

	FLEXIBLE						SUPER FLEXIBLE			EXTRA FLEXIBLE		RM			
	1/4" F	3/8" F	1/2" F	7/8" LA	1-1/4" LA	1-5/8" LA	1/4" SF	3/8" SF	1/2" SF	1/4" XF	3/8" XF	1/2" RM	7/8" RM	1-1/4" RM	1-5/8" RM
<b>N Female</b>	C0056E	C0062E	C0059E	C0657E	C0057E	C0067E	C0038E	C4271E	C0044E	C1048X	C0327X	C0059E	C0657E	C0057E	C0067E
<b>N Male</b>	C0066E	C0064E	C0375E	C0656E	C0058E	C0068E	C0036E	C2863E	C0042E	C0288X	C0045X	C0375E	C0656E	C0058E	C0068E
<b>N Male elbow</b>	C0065E	C0063E	C0060E	C1055E	C1056E	C1057E	C0037E	C4272E	C0043E	C0324X	C0326X	C0060E	C1055E	C1056E	C1057E
<b>4.3-10 Male</b>	C4084E	—	C2354E	C2421E	C2759E	—	C5755E	—	C2276E	—	—	C2354E	C2421E	C2759E	—
<b>4.3-10 Female</b>	—	—	C2355E	C2279E	C2664E	—	—	—	C2418E	—	—	C2355E	C2279E	C2664E	—
<b>4.3-10 Male Elbow</b>	—	—	C2419E	C2422E	C4087E	—	C5756E	—	C2420E	—	—	C2419E	C2422E	C4087E	—
<b>Preparation Tool</b>	—	—	C1574X	C0351X	C0352X	C0353X	C0233X	C0234X	C1573X	—	—	C1574X	C0351X	C0352X	C0353X
ADAPTORS															
<b>N Male N Male</b>	<b>N Female N Female</b>		<b>N Male elbow N Female</b>			<b>4.3-10 Female N Female</b>		<b>4.3-10 Female N Male</b>							
C0095E	C0094E		C0097E			C2946E		C2945E							
<b>N Male Elbow N Male</b>	<b>4.3-10 Female 4.3-10 Female</b>		<b>4.3-10 Male 4.3-10 Male</b>			<b>4.3-10 Male N Female</b>		<b>4.3-10 Male 4.3-10 Female elbow</b>							
C4830E	C2947E		C4946E			C5902E		C5990E							



## FIND OUR VIDEOS OF INSTALLATION AND IMPLEMENTATION

**1/2 SF connectors:** <https://youtu.be/MtaSsH2xLmA> - [https://youtu.be/l8\\_e\\_UH5ZJw](https://youtu.be/l8_e_UH5ZJw)

**1/2" F connector:** [https://www.youtube.com/watch?v=l8\\_e\\_UH5ZJw](https://www.youtube.com/watch?v=l8_e_UH5ZJw)

**7/8' connectors:** <https://youtu.be/ltCljsjVQJYk>

**1-1/4' connectors:** <https://www.youtube.com/watch?v=WEUxhu6ANDI>

**1-5/8' connectors:** <https://youtu.be/sw0gLzpEsFc> - <https://youtu.be/sw0gLzpEsFc>



# Jumpers

HYPERCELL® jumpers provide flexibility to Distributed Antenna System (DAS) Radiofrequency connections.



INDOOR DISTRIBUTED ANTENNA SYSTEM

## INTERFACES

- N and 4.3-10 interfaces, in straight and elbow type available.

## FLEXIBILITY

- Low bending moment to avoid any mechanical stress.

## JACKET

- Indoor/ Outdoor LSOH Fire-retardant.
- Underwriters Laboratories 1666 / CATVR available.

## PERFORMANCES

- Soldered connectors to ensure Low VSWR and passive intermodulation.
- 100 % Factory-controlled.

## BENEFITS

- + Available in Flexible & Super Flexible type.

JUMPERS				
1/4" SF	1/4" F	3/8" SF	1/2" SF	1/2" F
LSOH FR Jacket	LSOH FR Jacket	LSOH FR Jacket	LSOH FR Jacket	LSOH FR Jacket
N Female – N Male Elbow	N Male – N Male	N Male – N Male	N Male – N Male	N Male – N Male
N Male – N Female	4.3-10 Male – 4.3-10 Male		N Male – N Female	4.3-10 Male – 4.3-10 Male
N Male – N Male elbow			N Male – N Male elbow	
			4.3-10 Male – 4.3-10 Male	

# Antennas



HYPERCELL® Indoor antennas transmit and receive Radiofrequency signals in the building.



ACOME indoor antennas are designed to support broadband wireless services in the building. Antennas are built from lightweight material suitable for ceiling mounting.

INDOOR  
DISTRIBUTED ANTENNA SYSTEM

## TYPES

- Omni-directional Antenna.
- Omni-directional Antenna MIMO.
- Panel direction Antenna.
- Panel direction Antenna MIMO.
- Bi-directional Antenna.

## INTERFACES

- 1 x N Female.
- 2 x N Female (MIMO).
- 1 x 4.3-10 Female.
- 2 x 4.3-10 Female (MIMO).

## CHARACTERISTICS

- Wide frequency band: 698MHz~4000MHz.
- Low insertion loss and return loss.
- Low intermodulation:  $\leq -153\text{dBc}@2\times 33\text{dBm}$ .
- High Gain.

ANTENNAS					
	Omni directional antenna 5150	Panel directional antenna 5150	Omni directional antenna-MIMO	Panel directional antenna-MIMO	Bi-directional antenna
N female	C4022E	C4045E	C4270E	C4046E	C5878E
4.3-10 Female	C5800E	C5801E	C5850E	C5881E	C6007E



# Chamber Couplers

HYPERCELL® Chamber couplers are designed to divide one input signal into two unequal output signals.



INDOOR DISTRIBUTED ANTENNA SYSTEM

## FEATURES

- Wide frequency band: 698~3800MHz.
- Low intermodulation.
- High power.
- Low insertion loss.
- Easy installation.

		CHAMBER COUPLERS								
		5dB	6dB	7dB	8dB	10dB	13dB	15dB	20dB	30dB
N Female	C5884E	C1849E	C2215E	C1850E	C1851E	C2267E	C1852E	C1853E	N.A.	
4.3-10 Female	C5886E	C2462E	C4309E	C2464E	C2465E	C2466E	C2467E	C2468E	C5901E	



# Chamber Power Splitters



HYPERCELL® Power splitters are designed to divide input signal into several equal output signals.



## TYPES

- 2 ways, 3 ways, 4 ways.

## INTERFACES

- N Female.
- 4.3-10 Female.

## CHARACTERISTICS

- Wide frequency band: 698MHz~3800MHz.
- Low insertion loss and return loss.
- Low intermodulation.
- Indoor.

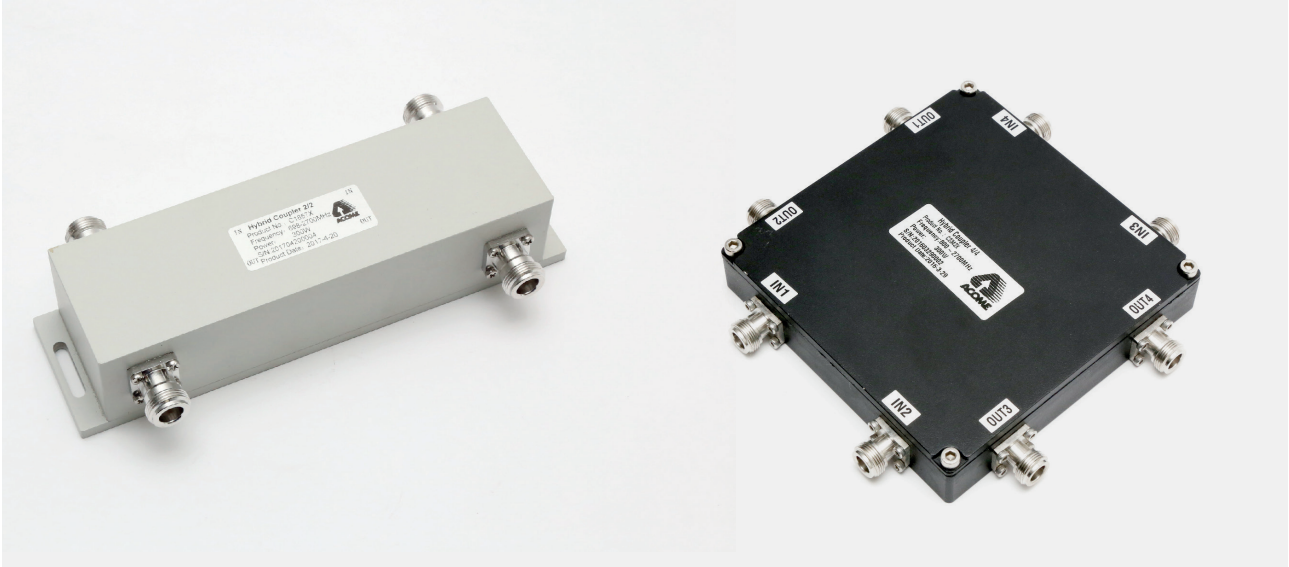
INDOOR  
DISTRIBUTED ANTENNA SYSTEM

CHAMBER POWER SPLITTERS			
	2-ways	3-ways	4-ways
N Female	C1854E	C1855E	C1856E
4.3-10 Female	C2661E	C2662E	C2663E



# Hybrid couplers

HYPERCELL® Hybrid couplers equally combine wireless signals and transfer the combined signal to output ports.



INDOOR DISTRIBUTED ANTENNA SYSTEM

## TYPES

- 2 in 2 out, 4 in 4 out.

## INTERFACES

- N Female.
- 4.3-10 Female.

## CHARACTERISTICS

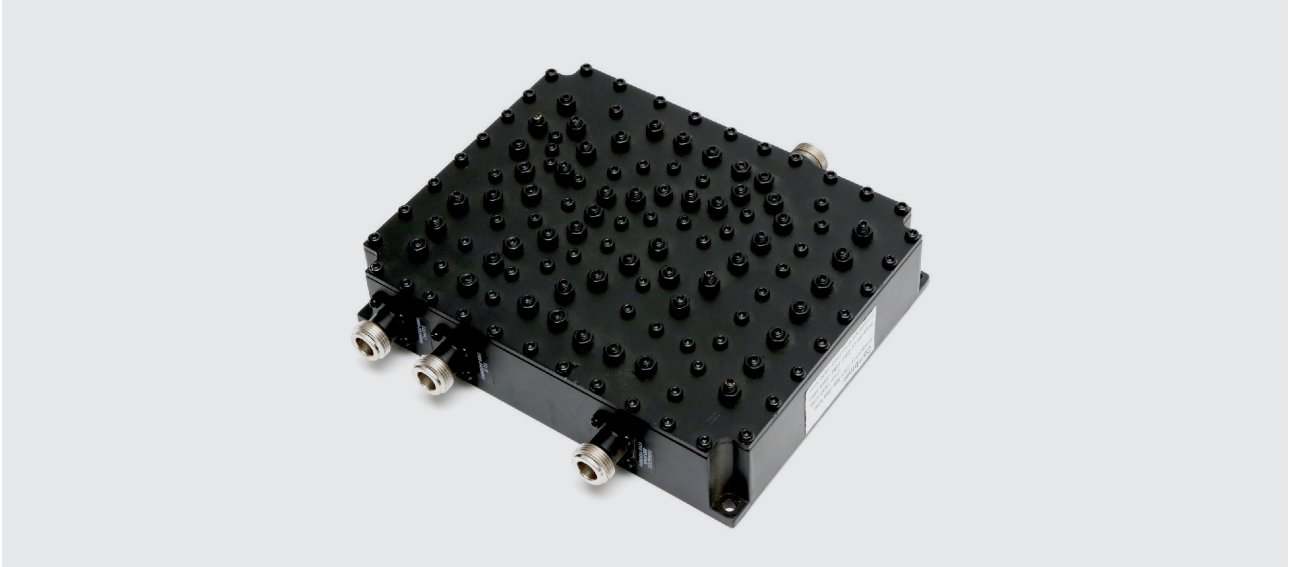
- Wide frequency band: 698MHz~3800MHz.
- Low insertion loss and return loss.
- Low intermodulation.
- Indoor.

HYBRID COUPLERS		
	2 in/2 out ports	4 in/4 out ports
N Female	C1857E	C2252E
4.3-10 Female	C2474E	C2475E

# Combiners



ACOME Combiners mix signals of different frequency range to the indoor DAS system.



## INTERFACES

- N Female.
- 4.3-10 Female.

## CHARACTERISTICS

- High Power.
- Low insertion loss.
- Low PIM (-155 dBc@2x43dBm).
- Easy installation.

	COMBINERS		
	Dual Band 790-960 MHz 1710-2700 MHz	Triple Band 790-960 MHz 1710-1880 MHz 1920-2170 MHz	Quadruple band 690-960 MHz 1710-1880 MHz 1920-2170 MHz 2300-2770 MHz
N Female	C2650X	C2399X	C2789X
4.3-10 Female	C4571X	C6202X	C4468X

INDOOR  
DISTRIBUTED ANTENNA SYSTEM



# Attenuators

ACOME Attenuators reduce the power of a signal at defined value without distorting its waveform.



INDOOR DISTRIBUTED ANTENNA SYSTEM

## INTERFACES

- 4.3-10 Male – 4.3-10 Female.

## CHARACTERISTICS

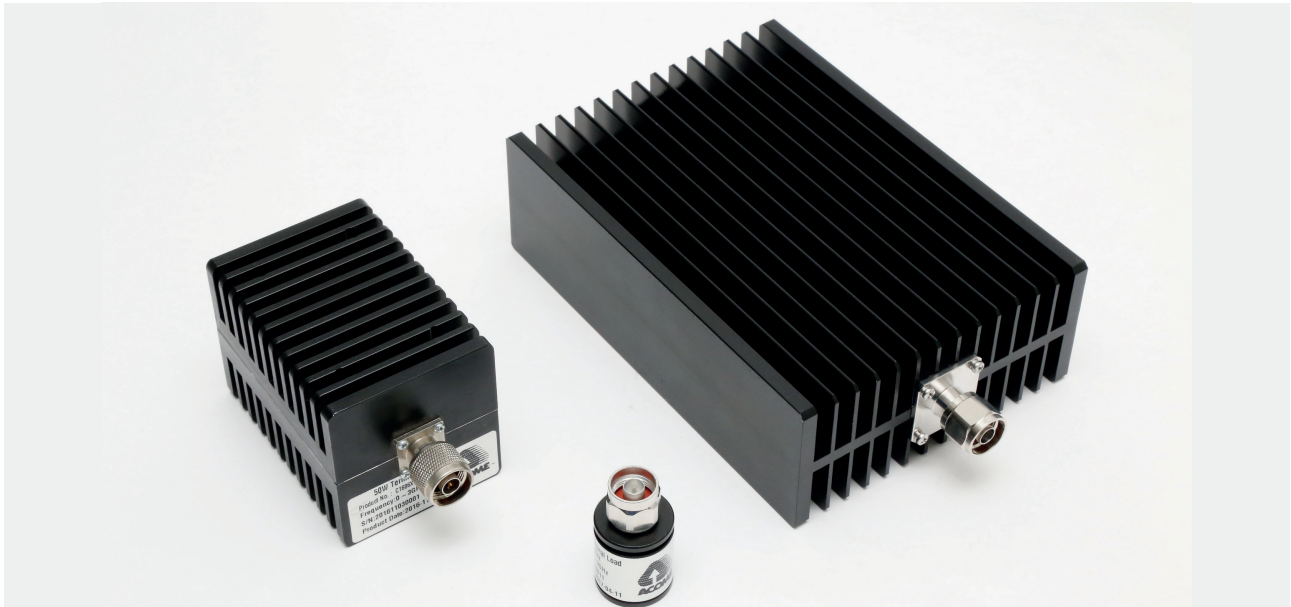
- Wide frequency band: DC~3000MHz.
- Low return loss .
- Low PIM (-155dBc).

ATTENUATORS						
	3dB	6dB	10dB	15dB	20dB	30dB
<b>5W</b>	C6095E-A3	C6095E-A6	C6095E-A10	C6095E-A15	C6095E-A20	C6095E-A30
<b>10W</b>	C6096E-A3	C6096E-A6	C6096E-A10	C6096E-A15	C6096E-A20	C6096E-A30
<b>20W</b>	C6097E-A3	C6097E-A6	C6097E-A10	C6097E-A15	C6097E-A20	C6097E-A30
<b>25W</b>	C6098E-A3	C6098E-A6	C6098E-A10	C6098E-A15	C6098E-A20	C6098E-A30
<b>50W</b>	C6099E-A3	C6099E-A6	C6099E-A10	C6099E-A15	C6099E-A20	C6099E-A30
<b>100W</b>	C6200E-A3	C6200E-A6	C6200E-A10	C6200E-A15	C6200E-A20	C6200E-A30
<b>200W</b>	C6201E-A3	C6201E-A6	C6201E-A10	C6201E-A15	C6201E-A20	C6201E-A30

# Terminal loads



HYPERCELL® terminal loads are commonly used as dummy loads of antennas and transmitters. They are also used as match ports in many multiport microwave devices such as circulators and directional couplers.



## TYPE

- N Male interface.
- N Female.
- 4.3-10 Male.
- 4.3-10 Female.

## WIDE FREQUENCY RANGE

- 380-3 800MHz.

## PERFORMANCES

- Low Return Loss.
- Low intermodulation.
- N:  $\leq -153$  dBc (PIM3@2x43dBm)
- 4.3-10:  $\leq -160$  bDc (PIM3@2x43dBm).

	TERMINAL LOADS									
	2W	5W	10W	20W	25W	30W	50W	80W	100W	200W
N Male	C2317E	C1684E	C2324E	C2328E	C2679E	C2283E	C1686E	C2703E	C2683E	C2687E
N Female	C2318E	C2321E	C2325E	C2329E	C2680E	C2332E	C2334E	C2704E	C2684E	C2688E
4.3-10 male	C5991E	C5993E	C4017E	C5994E	C5997E	C5995E	C5996E	C5998E	C5999E	C5901E
4.3-10 Female	C2478E	C5893E	C4698E	C4558E	C4314E	C2487E	C4559E	C6003E	C2490E	C6000E

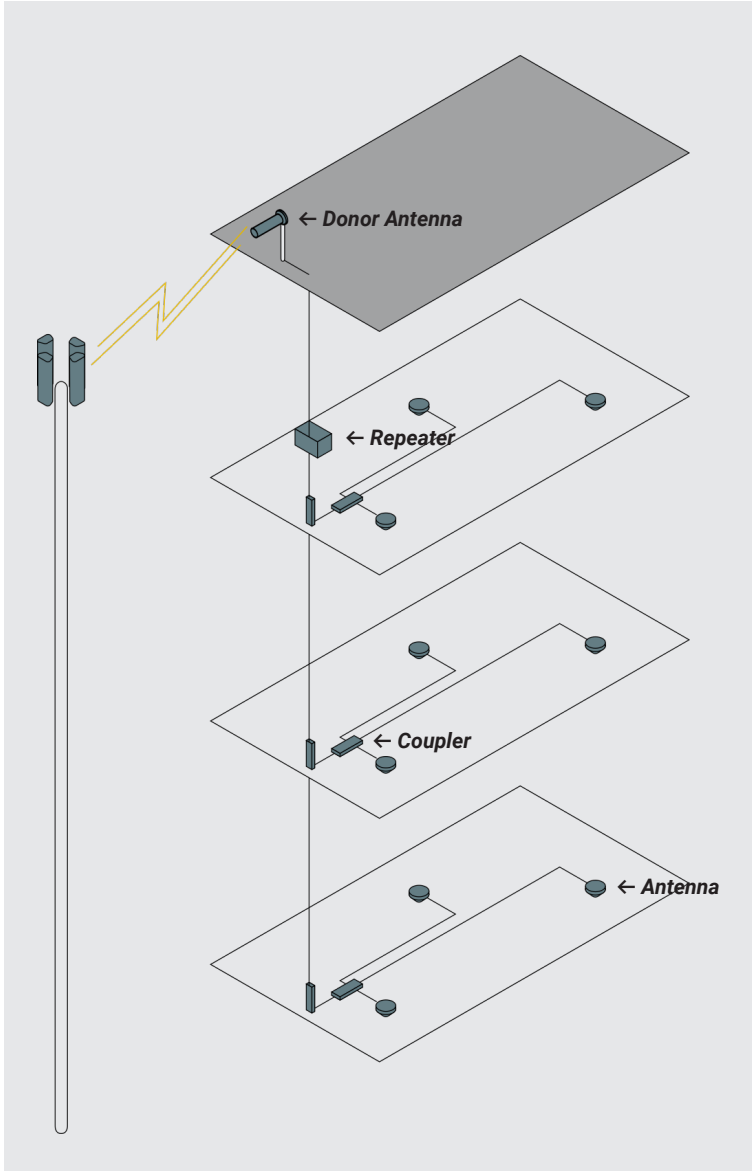
INDOOR  
DISTRIBUTED ANTENNA SYSTEM



# RF DAS Repeaters

HYPERCELL® RF Repeaters extend outdoor Mobile services inside the building.

INDOOR DISTRIBUTED ANTENNA SYSTEM



## FREQUENCY RANGE

- 800/900/1800MHz.
- 900/1800/2100MHZ.

## INTERFACE

- 4.3-10 Female.

	REPEATERS	
	Lower power (20dBm)	Medium power (30dBm)
Tri-Band Micro-repeater 800 / 900 / 1 800 MHz	C3733X	C3740X
Tri-Band Micro-repeater 900 / 1 800 / 2 100 MHZ	C3734X	C3741X
Log periodic donor antennas	C6006E	

# Contacts

## **ACOME France**

52, rue du Montparnasse  
75014 Paris – France  
Tel : + 33.1.42.79.14.00  
btdi@acome.fr

## **ACOME XINTAI CABLES Co. Ltd**

Room 906, Baohua Building,  
No 1211 Changde Road  
Shanghai, 200060  
P.R. China  
Tel : +86 21 3221 2916-11  
acome@acome.cn





52 rue du Montparnasse  
75014 Paris - France  
T. +33 1 42 79 14 00

[www.acome.com](http://www.acome.com)